



£199,950

40 Collingsway
West Park
Darlington
Co Durham
DL2 2FD

EPC Rating TBC

ENTRANCE HALL Double Glazed front door, stunning tiled flooring, stairs leading to first floor

LOUNGE 15' 11" x 11' 6" (4.87m x 3.53m) Double glazed windows, two radiators and feature fire surround with electric fire.

KITCHEN/DINER 15' 11" x 10' 2" (4.86m x 3.10m) Double glazed window and french doors leading to the garden. Wall and floor fitted units with intergrated washing machine, fridge, freezer and dish washer. Electric oven and gas hob, stop lights and tiles flooring and radiator.

DOWNSTAIRS W/C Toilet and sink unit, heated towel rail, fully tiled walls and flooring.

LANDING With access to the loft which is half boarded out.



Stunning three bedroom property for sale, located in the popular area of West Park. This property is kept to a very high standard, i would recommend early viewing. Property comprises of three bedrooms, one with en-suite, kitchen/diner, lounge, down stairs W/C, garden, drive and garage.

BEDROOM 12' 0" x 11' 0" (3.66m x 3.37m) Double glazed window, radiator and fitted mirror wardrobes

ENSUITE 6' 10" x 4' 7" (2.09m x 1.42m) Shower cubicle sink and toilet, vinyl flooring

BEDROOM 10' 6" x 8' 7" (3.22m x 2.62m) Double glazed window and radiator

BEDROOM 9' 9" x 7' 3" (2.98m x 2.21m) Double glazed window and radiator

FAMILY BATHROOM 6' 6" x 5' 6" (2.00m x 1.70m) Double glazed window, heated towel rail, toilet, sink and bath, tiled surround and vinyl flooring

GARDEN Patio area, enclosed garden with access to the garage and drive.

DRIVE With parking for one car

GARAGE With up and over garage door, electric car charge port within

Tenure: Freehold

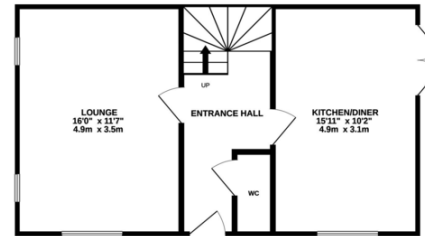
Council Tax Band

Local Authority:

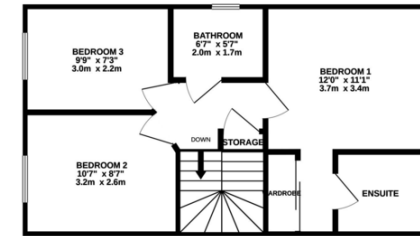
Agents Note: Whilst every care has been taken to prepare these sales particulars, they are for guidance purposes only. All measurements are approximate and for general guidance purposes only and whilst every care has been taken to ensure their accuracy, they should not be relied upon and potential buyers are advised to recheck the measurements

%epcGraph_c_1_355%

GROUND FLOOR



1ST FLOOR



Whilst every attempt has been made to ensure the accuracy of the floorplan contained here, measurements of doors, windows, rooms and any other items are approximate and no responsibility is taken for any error, omission or mis-statement. This plan is for illustrative purposes only and should be used as such by any prospective purchaser. The services, systems and appliances shown have not been tested and no guarantee as to their operability or efficiency can be given.
Made with Metropix ©2022

Sales Office

Alton House,
27-31 Grange Road
Darlington
County Durham
DL1 5NA

Contact Us

www.mypropertybox.co.uk
sales@mypropertybox.co.uk
01325 582101

Opening Hours

Mon-Fri: 9am - 5pm
Sat: 9am - 1pm