



MY PROPERTY BOX
SALES | LETTINGS | INVESTMENTS



Offers In Region Of £250,000

9 West End
Hurworth
Darlington
DL2 2HB

EPC Rating TBC

****STUNNING COTTAGE - VILLAGE LOCATION****

Located in the beautiful village of Hurworth, this spacious home is bursting with period features and charm. Within walking distance to the local shops, pubs and amenities and with easy access to the A66 and A1.

Property comprises of entrance hallway, living room with feature fireplace, dining room with fireplace, galley kitchen with oven and hob, integrated fridge/freezer. Utility room with plumbing for washing machine. To the first floor are three bedrooms, two good size double bedrooms, one large single with built in storage cupboard. Family bathroom with white suite, bath, shower cubicle and wc. Additional room with wc.

Private enclosed yard to the rear and garage accessed via rear alleyway.

Garden to the front aspect.

On street parking.

Tenure: Freehold

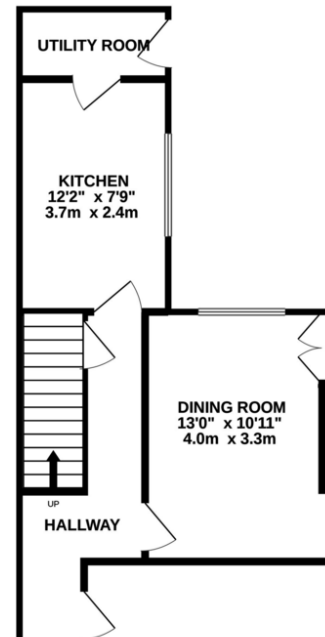
Council Tax Band

Local Authority:

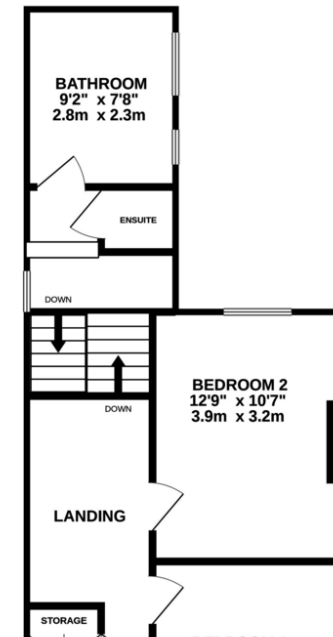
Agents Note: Whilst every care has been taken to prepare these sales particulars, they are for guidance purposes only. All measurements are approximate and for general guidance purposes only and whilst every care has been taken to ensure their accuracy, they should not be relied upon and potential buyers are advised to recheck the measurements

%epcGraph_c_1_355%

GROUND FLOOR



1ST FLOOR



Sales Office

Alton House,
27-31 Grange Road
Darlington
County Durham
DL1 5NA

Contact Us

www.mypropertybox.co.uk
sales@mypropertybox.co.uk
01325 582101

Opening Hours

Mon-Fri: 9am - 5pm
Sat: 9am - 1pm